



Swami Vivekanand *Government Model School*

Session
2025-26





उत्तिष्ठत
जाग्रत
प्राप्य
वरान्निबोधत।

उठो, जागो और ध्येय
की प्राप्ति तक रूको मत ।

"Arise, awake and stop not
until the goal is achieved."

- Swami Vivekananda

APRIL 2025

**Holidays will be according to SHIVIRA Calendar and
Govt. of Rajasthan Calendar**

CELEBRATIONS

- WELCOME AND BEGINNING OF NEW SESSION
- WORLD HEALTH DAY 7TH APRIL.
- WORLD HERITAGE DAY 18TH APRIL.
- NATIONAL CIVIL SERVICE DAY 21ST APRIL.
- INTERNATIONAL EARTH DAY 22ND APRIL.
- NATIONAL PANCHAYATI DAY 24TH APRIL.

OFFICE WORK

- UPDATION OF SCHOLAR REGISTER AND STUDENT PROFILE.
- FEE COLLECTION FOR CLICK SCHEME.
- STARTING OF COMPUTER CLASSES UNDER CLICK SCHEME.
- WRITING OF ACRs OF THE STAFF.
- COMPLETION OF SERVICE RECORDS.
- OPERATIONALISING HOUSE SYSTEM.
- RESULT ANALYSIS NON-BOARD CLASSES AND TEACHERS MEETING (3RD SATURDAY).
- DISTRIBUTION OF FREE TEXT BOOKS.
- TERM WISE SYLLABUS DISTRIBUTION PLAN 1ST WEEK.
- HOUSE INSPECTION INCLUDING UNIFORM AND RECORD MAINTENANCE.
- ADMISSION PROCESS OF 6TH TO 10TH CLASSES.
- CONDUCT OF SMC/SDMC MEETING ON AMAVASYA.
- FINALIZATION OF INCOME TAX AND ISSUE FORM-16.
- STOCK VERIFICATION 1ST WEEK OF APRIL 2025.
- **APPLY FOR EXTENSION OF CBSE AFFILIATION. (IMPORTANT)**

ACTIVITIES

- FRESHERS MEET
- CAREER COUNSELLING AND GUIDANCE BY A CAREER COUNSELLOR.
- INTER HOUSE CHESS, KHO-KHO, VOLLEYBALL, BASKETBALL & KABADDI TOURNAMENT.
- LITERARY ACTIVITY (POEM RECITATION, SHLOKAS, SOLO SONG).
- PARIWAR SAKSHARTA SHAPATH.
- PHOTOGRAPHY ACTIVITY.

GENERAL INSTRUCTIONS FOR ENTIRE SESSION

- MAJOR EXPOSURE VISIT (ONE) INTERSTATE/INTRASTATE (1200KMS MAXIMUM, PLAN ONLY IN SUMMER/ WINTER/DEEPAWALI VACATIONS/IN CONTINUOUS 3-4 DAYS HOLIDAYS.)
 - SDMC PLANNING
 - LOCAL EXPOSURE VISIT (THREE)
 - SUBJECT WISE MONTHLY ASSESSMENT OF STUDENTS THROUGH WRITTEN TEST (LAST TWO WORKING DAYS OF EACH MONTH)
 - CELEBRATIONS OF THE DAYS ARE SUGGESTIVE. PRINCIPALS ARE ADVISED TO CELEBRATE AT LEAST 2 EVENTS EVERY MONTH DOCUMENTATION OF EVERY ACTIVITY / CELEBRATION IS NEEDED.
 - STAFF MEETING MUST BE TAKEN ONCE IN A WEEK. RECORD TO BE MAINTAINED PROCEEDING OF STAFF MEETINGS DESIRABLE FOR MANAGEMENT PURPOSE.
 - ENSURE ATTENDANCE ON BIOMETRIC MACHINE/SHALADARPAN.
- ALL CBSE RELATED CIRCULARS MUST BE FOLLOWED AS PER THE CBSE DIRECTIVES.**

S	M	T	W	T	F	S
		1	2	3	4	5
6	7	8	9	10	11	12
13	14	15	16	17	18	19
20	21	22	23	24	25	26
27	28	29	30			

4

SCHOOL TIMINGS

For STAFF

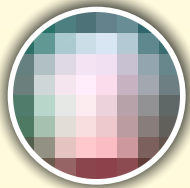
07:30 AM to 03:30 PM

Class 1 to 5

08:00 AM to 01:30 PM

Class 6 to 12

08:00 AM to 02:30 PM



Swami Vivekanand

Government Model School

APRIL 2025



MAY 2025

S	M	T	W	T	F	S
				1	2	3
4	5	6	7	8	9	10
11	12	13	14	15	16	17
18	19	20	21	22	23	24
25	26	27	28	29	30	31

5

For STAFF

07:30 AM to 03:30 PM

SCHOOL TIMINGS

Class 1 to 5

08:00 AM to 01:30 PM

Class 6 to 12

08:00 AM to 02:30 PM

**Holidays will be according to SHIVIRA Calendar and
Govt. of Rajasthan Calendar**

CELEBRATIONS

- INTERNATIONAL LABOUR DAY 1ST MAY.
- WORLD PRESS FREEDOM DAY 3RD MAY.
- RABINDRANATH TAGORE JAYANTI 7TH MAY.
- WORLD RED CROSS DAY, MOTHERS' DAY 8TH MAY.
- NATIONAL TECHNOLOGY DAY 11TH MAY.
- NATIONAL SOLIDARITY DAY 13TH MAY.
- MAHARANA PRATAP JAYANTI 29TH MAY.
- WORLD NO TOBACCO DAY 31ST MAY.

OFFICE WORK

- COLLECTION OF MATERIAL FOR VIDYALAYA PATRIKA "PRAVAAH".
- PLANNING FOR HOBBY CLASSES IN SUMMER VACATIONS.
- PTA AND SDMC/SMC MEETING ON AMAVASYA.
- GENDER CELL (GARIMA) MEETING 2ND WEEK.
- ASSIGNMENTS FOR VACATION TO THE STUDENTS.

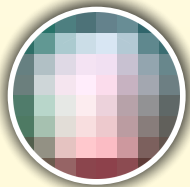
ACTIVITIES

- INTER HOUSE FOOTBALL, HANDBALL, ATHLETICS, AND HOCKEY TOURNAMENT.
- LITERARY ACTIVITY (ESSAY WRITING COMPETITION).
- CARD MAKING COMPETITION.
- INTER HOUSE SOCIAL SCIENCE SLOGAN WRITING COMPETITION.
- INTER HOUSE REASONING COMPETITION.

GENERAL INSTRUCTIONS FOR ENTIRE SESSION

- CHECK AND SIGN THE DAILY ATTENDANCE REGISTER.
- CHECK LATE COMERS AMONG STAFF AND STUDENTS.
- ENSURE SMOOTH CONDUCT OF MORNING ASSEMBLY.
- SUPERVISION OF: (A) CLEANLINESS, TOILETS, DRINKING WATER SYSTEM, LABS, LIBRARY, AND FIELD ACTIVITIES, FIRE SAFETY AUDIT.
- (B) CLASS ROOM TEACHING.
- (C) QUALITY CHECK OF MDM.
- IMPLEMENT & MONITOR VARIOUS ACTIVITIES, POLICIES & PROGRAMME OF MODEL SCHOOL.
- PRINCIPAL'S DIARY/TEACHER DIARY.
- ATTEND PARENTS AND VISITORS, SOLUTION OF PROBLEMS OF STAFF & STUDENTS.
- ADDRESS STUDENTS IN THE MORNING ASSEMBLY.
- FINANCIAL MATTERS. 1. CHECKING OF CASH BOOKS FUND.
- 2. REGULAR MAINTENANCE OF LEDGERS OF FUND.
- CLASS ROOM (TEACHING LEARNING) OBSERVATION.
- UPDATATION OF SHALA-DARPAN & WEBSITE REGULARLY.

ALL CBSE RELATED CIRCULARS MUST BE FOLLOWED AS PER THE CBSE DIRECTIVES.



Swami Vivekanand

Government Model School

MAY 2025



JUNE 2025

Holidays will be according to SHIVIRA Calendar and Govt. of Rajasthan Calendar

CELEBRATIONS

- WORLD ENVIRONMENT DAY 5TH JUNE.
- INTERNATIONAL YOGA DAY 21ST JUNE.
- BHAMASHAH JAYANTI AND ALUMNI MEET 28TH JUNE.

OFFICE WORK

- ACADEMIC PLANNING OF SCHOOL TO BE EXECUTED AFTER VACATION.
- SAFETY CERTIFICATION OF BUILDING.
- STAFF CAPACITY BUILDING PROGRAMME.
- PLANNING FOR MAINTENANCE OF REPAIR WORKS OF BUILDING, FURNITURE, COMPUTERS, K-YAN, ATL LAB, ROBOTICS LAB, SCIENCE LABS ETC.

ACTIVITIES

- HOBBY CLASSES DURING VACATIONS.
- BAND TRAINING DURING VACATIONS.
- SPOKEN ENGLISH CLASSES DURING VACATIONS.

GENERAL INSTRUCTIONS FOR ENTIRE SESSION

- MONTH –WISE CHECK POINTS. TO BE SENT BEFORE 7TH OF EVERY MONTH.
- INTER CLASS DISPLAY BULLETIN BOARD COMPETITION LAST WORKING DAY OF EVERY MONTH.
- MIS REPORT.
- FUND REQUISITION/CONFIRM SALARY RECEIPT(BEFORE 3RD OF EVERY MONTH)
- MONTHLY STATEMENT OF SCHOOL FUNDS.
- ENROLLMENT POSITION.
- CONDUCT FACULTY AND STAFF MEETING.
- UPDATION OF SCHOOL WEBSITE AND SHALADARPAN.
- DISBURSEMENT OF SALARY(REGULARISE PERIODS OF LEAVE/ABSENT OF STAFF UPLOAD BY 20TH)

ALL CBSE RELATED CIRCULARS MUST BE FOLLOWED AS PER THE CBSE DIRECTIVES.

S	M	T	W	T	F	S
1	2	3	4	5	6	7
8	9	10	11	12	13	14
15	16	17	18	19	20	21
22	23	24	25	26	27	28
29	30					

6

For STAFF

07:30 AM to 03:30 PM

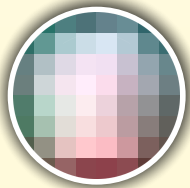
SCHOOL TIMINGS

Class 1 to 5

08:00 AM to 01:30 PM

Class 6 to 12

08:00 AM to 02:30 PM



Swami Vivekanand

Government Model School

JUNE 2025



JULY 2025

Holidays will be according to **SHIVIRA** Calendar and Govt. of
Rajasthan Calendar

CELEBRATIONS

- VAN MAHOTSAV 1ST WEEK OF JULY.
- GURU POORNIMA 10TH JULY.(THURSDAY)
- WORLD POPULATION DAY 11TH JULY.
- WORLD YOUTH SKILLS DAY 15TH JULY.
- KARGIL VICTORY DAY 26TH JULY.
- WORLD NATURE CONSERVATION DAY 28TH JULY.
- PLANTATION WEEK.

OFFICE WORK

- OASIS SUBMISSION
- PUBLICATION OF VIDYALAYA PATRIKA "PRAVAAH"
- SHALA DARPAN/SCHOOL WEBSITE UPDATATION AS PER CBSE RULES.
- ADMISSION PROCESS OF CLASS 11TH.

ACTIVITIES

- CONSTITUTION OF BAL SANSAD.
- INVESTITURE CEREMONY 4TH WEEK (STUDENT COUNCIL-HEAD BOY AND HEAD GIRL)
- INTER HOUSE YOGA COMPETITION 3RD SATURDAY.
- INTER HOUSE CHESS, CRICKET, CAROM, YOGA, TABLE TENNIS 4TH SATURDAY.
- INTER HOUSE POSTER DRAFTING, CALLIGRAPHY 3RD WEEK.
- SCHOOL BAND REHEARSAL.
- PTA MEETING ON AMAVASYA.
- SCHOOL LEVEL DRAWING AND PAINTING AND ART AND CRAFT COMPETITION 3RD WEEK.
- CLUSTER LEVEL DRAWING & PAINTING AND ART & CRAFT COMPETITION 4TH WEEK.
- 1ST PERIODIC ASSESSMENT 4TH WEEK OF JULY.

EXAMINATION SCHEDULE SESSION 2025-26.

Sr. No.	Tentative Month	Class 1-8	Class 9-10	Class 11-12
1.	4th Week of July 2025	Periodic Assessment-1	Periodic Test-1	Periodic Test-1
2.	1st Week of October 2025	Half Yearly	Periodic	Half Yearly Test-2
3.	2nd Week of January 2026	Periodic Assessment-2	Periodic Test-3	Periodic Test-2
4.	2nd & 3rd Week of March 2026	Annual Exam.	Annual Exam.	Annual Exam.

1. SYLLABUS OF TERM 1 MUST BE COMPLETED BY SEPTEMBER MONTH.
2. SYLLABUS OF TERM 2 MUST BE COMPLETED BY FEBRUARY MONTH.
3. SYLLABUS FOR BOARD CLASSES MUST BE COMPLETED BY DECEMBER MONTH.

All CBSE Related Circulars Must be followed as per the CBSE Directives.

S	M	T	W	T	F	S
		1	2	3	4	5
6	7	8	9	10	11	12
13	14	15	16	17	18	19
20	21	22	23	24	25	26
27	28	29	30	31		

7

SCHOOL TIMINGS

For STAFF

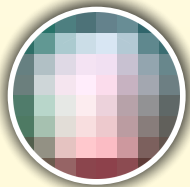
07:30 AM to 03:30 PM

Class 1 to 5

08:00 AM to 01:30 PM

Class 6 to 12

08:00 AM to 02:30 PM



JULY 2025

Swami Vivekanand

Government Model School

GENERAL INSTRUCTION

DURATION

30 MINUTES

30 MINUTES

40 MINUTES

40 MINUTES

10 MINUTES

40 MINUTES

40 MINUTES

30 MINUTES

40 MINUTES

40 MINUTES

10 MINUTES

35 MINUTES

35 MINUTES

60 MINUTES

NAME OF ACTIVITY

STAFF ASSIGNMENT

MORNING ASSEMBLY

1ST PERIOD

2ND PERIOD

MINI BREAK

3RD PERIOD

4TH PERIOD

LUNCH BREAK

5TH PERIOD

6TH PERIOD

MINI BREAK

7TH PERIOD

8TH PERIOD

REMEDIAL TEACHING, LESSON PLANNING, CONTACT WITH PARENTS REPRESENTATION OF TEACHING SKILLS, HOMEWORK CHECKING, INVOLVEMENT OF STUDENTS/TEACHER IN ICT LAB, SPOKEN ENGLISH PROFICIENCY ENHANCEMENT ACTIVITIES.



AUGUST 2025

**Holidays will be according to SHIVIRA Calendar and
Govt. of Rajasthan Calendar**

CELEBRATIONS

- WORLD TRIBAL DAY 9TH AUGUST.
- QUIT INDIA MOVEMENT DAY 9TH AUGUST.
- INTERNATIONAL YOUTH DAY 12TH AUGUST.
- INDEPENDENCE DAY 15TH AUGUST.
- NATIONAL GAMES DAY 29TH AUGUST.

OFFICE WORK

- SDMC, SMC, PTA MEETING 15TH AUGUST.
- MEDICAL CHECKUP, HEALTH CARDS.
- SCHOLARSHIP FORMS INVITATION.
- TEACHER TUNING WITH OTHER SCHOOLS(KV/NAVODAY/GOOD CBSE SCHOOLS).
- SUBMISSION OF OASIS DATA, HPE PORTAL UPDATION.
- REGISTRATION OF CLASS IX & XI AND LOC FOR CLASS 10TH AND 12TH ON CBSE PORTAL.

ACTIVITIES

- CAREER COUNSELLING AND GUIDANCE BY CAREER COUNSELLOR.
- FIRST EXPOSURE CUM EXCURSION VISIT(LOCAL)
- INTER HOUSE LAWN TENNIS, BADMINTON AND RURAL GAMES 1ST SATURDAY.
- INTER HOUSE QUIZ COMPETITION (MATH, SCIENCE, G.K., ENGLISH, HINDI ETC.) 4TH SATURDAY.
- INTER HOUSE DANCE COMPETITION 4TH SATURDAY.
- INTER HOUSE SPORTS QUIZ 4TH SATURDAY.
- RURAL IT QUIZ PREPARATION.
- RAKHI MAKING COMPETITION 8TH AUGUST.
- SCHOOL LEVEL SCIENCE FAIR 4TH WEEK.
- STATE LEVEL DRAWING-PAINTING AND ART & CRAFT COMPETITION 1ST WEEK AT TALERA (BUNDI) CLUSTER 1

GENERAL INSTRUCTIONS FOR ENTIRE SESSION

FOUR VISITS ARE TO BE DONE IN EACH SESSION.

- SOCIAL SECTOR: VISIT TO INSTITUTES SUCH AS OLD AGE HOME, SPECIAL INSTITUTES FOR CWSN, LEPROSY CENTERS, HOSPITALS, ETC. IN 1ST QUARTER (IN MONTH OF JULY)
- SCIENCE AND TECHNOLOGY: LOCAL INDUSTRIES, SCIENCE PARK, TECHNICAL INSTITUTES, DAIRY PLANT, ETC. IN 2ND QUARTER (IN MONTH OF OCTOBER)
- HISTORICAL AND ENVIRONMENT: HISTORICAL MOVEMENTS, ECO-PARKS, FOREST AREA, BOTANICAL GARDENS, SANCTUARIES, BIRD WATCHING POINTS, ZOO, ETC. IN 3RD QUARTER (IN MONTH OF JANUARY)
- VISIT TO REPUTED SCHOOL/INSTITUTION (IIT, IIM, MEDICAL COLLEGE ETC.) ONCE IN A YEAR.
- ADVENTURES ACTIVITIES, SCOUT GUIDE, SPORTS TOURNAMENTS, SCIENCE EXHIBITIONS & FAIRS ARE ALSO INCORPORATED IN THE ACADEMIC CALENDAR.

ALL CBSE RELATED CIRCULARS MUST BE FOLLOWED AS PER THE CBSE DIRECTIVES.

8

For STAFF

07:30 AM to 03:30 PM

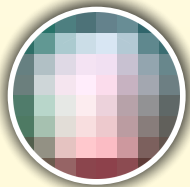
SCHOOL TIMINGS

Class 1 to 5

08:00 AM to 01:30 PM

Class 6 to 12

08:00 AM to 02:30 PM



Swami Vivekanand

Government Model School

AUGUST 2025



SEPTEMBER 2025

S	M	T	W	T	F	S
	1	2	3	4	5	6
7	8	9	10	11	12	13
14	15	16	17	18	19	20
21	22	23	24	25	26	27
28	29	30				

9

For STAFF

07:30 AM to 03:30 PM

SCHOOL TIMINGS

Class 1 to 5

08:00 AM to 01:30 PM

Class 6 to 12

08:00 AM to 02:30 PM

Holidays will be according to SHIVIRA Calendar and Govt. of Rajasthan Calendar

CELEBRATIONS

- TEACHER'S DAY 5TH SEPTEMBER.
- INTERNATIONAL LITERACY DAY 8TH SEPTEMBER.
- HINDI DIWAS 14TH SEPTEMBER (14 TO 28 SEPTEMBER HINDI PAKHWARA)
- WORLD FIRST AID DAY 13TH SEPTEMBER.
- INTERNATIONAL DAY OF DEMOCRACY 15TH SEPTEMBER.
- WORLD OZONE DAY 16TH SEPTEMBER.
- INTERNATIONAL DAY OF PEACE 21ST SEPTEMBER.

OFFICE WORK

- PTA, SMC, SDMC MEETING ON AMAVASYA.
- SUBMISSION OF OASIS DATA, HPE PORTAL UPDATION.
- REGISTRATION OF CLASS IX & XI AND LOC FOR CLASS 10TH AND 12TH ON CBSE PORTAL.

ACTIVITIES.

- CLUSTER LEVEL SCIENCE FAIR 1ST WEEK.
- STATE LEVEL SCIENCE FAIR 2ND WEEK AT GHATOL (BANSWARA) CLUSTER 3
- INTERHOUSE FUN GAMES 3RD SATURDAY.
- SECOND EXCURSION CUM EXPOSURE VISIT LOCAL.
- SCHOOL LEVEL SOCIAL SCIENCE EXHIBITION 4TH WEEK.

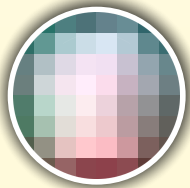
GENERAL INSTRUCTIONS FOR ENTIRE SESSION

- TO PREPARE COMPREHENSIVE SCHEDULE/PLANS FOR THE ENTIRE SESSION.
- SDMC MEETINGS.
- NOTEBOOK CHECKING.
- SCOUTS AND GUIDES ACTIVITIES.
- PLANNING FOR LOW ACHIEVERS AND BRIGHT STUDENTS.
- CCA & SPORTS ACTIVITIES.
- MEDICAL CHECK UP.
- ENSURE FIRE SAFETY AND BASIC AMENITIES & CLEANLINESS(SWACHCHHATA).

ALL CBSE RELATED CIRCULARS MUST BE FOLLOWED AS PER THE CBSE DIRECTIVES.

Time Table

IN WINTER	IN SUMMER	DURATION	NAME OF ACTIVITY
08.30 To 09.00 AM	07.30 To 08.00 AM	30 Minutes	Staff Assignment
09.00 To 09.30 AM	08.00 To 08.30 AM	30 Minutes	Morning Assembly
09.30 To 10.10 AM	08.30 To 09.10 AM	40 Minutes	1st Period
10.10 To 10.50 AM	09.10 To 09.50 AM	40 Minutes	2nd Period
10.50 To 11.00 AM	09.50 To 10.00 AM	10 Minutes	Mini Break
11.00 To 11.40 AM	10.00 To 10.40 AM	40 Minutes	3rd Period
11.40 To 12.20 PM	10.40 To 11.20 AM	40 Minutes	4th Period
12.20 To 12.50 PM	11.20 To 11.50 AM	30 Minutes	Lunch Break
12.50 To 01.30 PM	11.50 To 12.30 PM	40 Minutes	5th Period
01.30 To 02.10 PM	12.30 To 01.10 PM	40 Minutes	6th Period
02.10 To 02.20 PM	01.10 To 01.20 PM	10 Minutes	Mini Break
02.20 To 02.55 PM	01.20 To 01.55 PM	35 Minutes	7th Period
02.55 To 03.30 PM	01.55 To 02.30 PM	35 Minutes	8th Period
03.30 To 04.30 PM	02.30 To 03.30 PM	60 Minutes	Remedial Teaching, Lesson Planning, contact with parents Representation of teaching skills, home work checking, Involvement of students/ teachers in ICT Labs, spoken English proficiency, enhancement activities, completion of charge work, updating of student portfolio



Swami Vivekanand

Government Model School

SEPTEMBER 2025



OCTOBER 2025

Holidays will be according to SHIVIRA Calendar and
Govt. of Rajasthan Calendar

CELEBRATIONS.

- VIGILANCE WEEK
- INTERNATIONAL NON-VIOLENCE DAY/GANDHI JAYANTI, SHASTRI JAYANTI 2ND OCTOBER.
- WORLD TEACHER'S DAY 5TH OCTOBER.
- INTERNATIONAL GIRL CHILD DAY 11TH OCTOBER.
- WORLD STUDENT'S DAY (DR.APJ ABUL KALAM'S BIRTH DAY) 15TH OCTOBER.
- UNITED NATIONS DAY 24TH OCTOBER.
- DIWALI CELEBRATION ON THE EVE OF DIWALI BREAK.

OFFICE WORK

- PTA, SMC, SDMC MEETING ON AMAVASYA.
- SUBMISSION OF OASIS DATA, HPE PORTAL UPDATION.
- REGISTRATION OF CLASS IX & XI AND LOC FOR CLASS 10TH AND 12TH ON CBSE PORTAL.

ACTIVITIES

- 2ND PERIODIC TEST/ASSESSMENT/HALF YEARLY/TERM-1 EXAM. 1ST WEEK.
- CLUSTER LEVEL SOCIAL SCIENCE EXHIBITION 4TH WEEK.
- STATE LEVEL SOCIAL SCIENCE EXHIBITION 4TH WEEK AT RANI (PALI) CLUSTER 12
- CAREER COUNSELLING AND GUIDANCE BY A CAREER COUNSELLOR.
- INTER HOUSE RANGOLI AND MEHANDI COMPETITION 3RD SATURDAY.

ALL CBSE RELATED CIRCULARS MUST BE FOLLOWED AS PER THE CBSE DIRECTIVES.

10

For STAFF

08:30 AM to 04:30 PM

SCHOOL TIMINGS

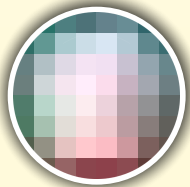
Class 1 to 5

09:00 AM to 02:30 PM

Class 6 to 12

09:00 AM to 03:30 PM





Swami Vivekanand

Government Model School

OCTOBER 2025



NOVEMBER 2025

Holidays will be according to SHIVIRA Calendar and Govt. of Rajasthan Calendar

CELEBRATIONS

- GURU NANAK JAYANTI 05TH NOVEMBER
- RASHTRIYA SHIKSHA DIWAS, MAULANA AZAD JANM DIWAS 11TH NOVEMBER.
- BAL DIWAS 14TH NOVEMBER.
- U.N.O. BAL ADHIKAR DIWAS 18TH NOVEMBER.
- Smt. INDIRA GANDHI JAYANTI (EKTA DIWAS) 19TH NOVEMBER
- DAY FOR ELIMINATION OF VIOLENCE AGAINST WOMEN 25TH NOVEMBER.
- CONSTITUTION DAY, NCC DAY 26TH NOVEMBER.

OFFICE WORK

- REVIEW FIRE SAFETY AND PROVISIONS OF OTHER BASIC AMENITIES.
- TEACHER'S TUNING WITH OTHER SCHOOLS (KV/NAVODAYA/GOOD CBSE SCHOOLS)
- PTA, SMC, SDMC MEETING ON AMAVASYA.

ACTIVITIES

- SCHOOL LEVEL EXTEMPORE (ENGLISH & HINDI) 1ST WEEK.
- CLUSTER LEVEL EXTEMPORE ENGLISH AND HINDI 2ND WEEK.
- STATE LEVEL EXTEMPORE (ENGLISH & HINDI) 3RD WEEK AT DAUSA (DAUSA) CLUSTER 8
- INTER HOUSE COMPETITION, ARCHERY, BOXING, WRESTLING COMPETITION.
- INTER HOUSE MIME, MONO ACTING COMPETITION.
- BAL MELA CELEBRATION, INTER HOUSE FANCY DRESS COMPETITION 3RD WEEK.
- SCHOOL BAND REHEARSAL.

ALL CBSE RELATED CIRCULARS MUST BE FOLLOWED AS PER THE CBSE DIRECTIVES.



11

For **STAFF**

08:30 AM to 04:30 PM

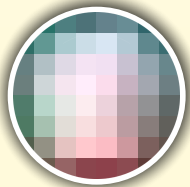
SCHOOL TIMINGS

Class 1 to 5

09:00 AM to 02:30 PM

Class 6 to 12

09:00 AM to 03:30 PM



Swami Vivekanand

Government Model School

NOVEMBER 2025



DECEMBER 2025

Holidays will be according to SHIVIRA Calendar and Govt. of Rajasthan Calendar

CELEBRATIONS

- WORLD AIDS DAY 1ST DECEMBER.
- WORLD DISABLED DAY 3RD DECEMBER
- ARMED FORCES FLAG DAY 7TH DECEMBER.
- UNICEF DAY 8TH DECEMBER.
- HUMAN RIGHTS DAY 10TH DECEMBER.
- WORLD ENERGY CONSERVATION DAY 14TH DECEMBER.
- VIJAY DIWAS 16TH DECEMBER.
- NATIONAL MATHEMATICS DAY 22ND DECEMBER.
- KISAN DIWAS 23RD DECEMBER.
- NATIONAL CONSUMER'S DAY 24TH DECEMBER
- GOOD GOVERNANCE DAY, CHRISTMAS DAY 25TH DECEMBER.
- VEER BAL DIWAS 26TH DECEMBER

OFFICE WORK

- PTA, SMC, SDMC MEETING ON AMAVASYA.
- ACR SUBMISSION OF MINISTRIAL STAFF.

ACTIVITIES

- SCHOOL LEVEL MATH OLYMPIAD 1ST WEEK.
- CLUSTER LEVEL MATHS OLYMPIAD 2ND WEEK.
- STATE LEVEL MATHS OLYMPIAD 22ND DECEMBER AT RASHMI (CHITTORGARH) CLUSTER 7
- PRE-BOARD PAPER FORMATION BY SUBJECT TEACHERS ACCORDING TO CBSE(4TH WEEK)
- COMPLETION OF SYLLABUS OF BOARD CLASSES.
- ASSIGNMENTS TO STUDENTS FOR WINTER VACATION.
- INTER HOUSE CLAY MODEL COMPETITION 3RD WEEK.
- INTER HOUSE FUN GAMES 4TH WEEK.

ALL CBSE RELATED CIRCULARS MUST BE FOLLOWED AS PER THE CBSE DIRECTIVES.

12

For **STAFF**

08:30 AM to 04:30 PM

SCHOOL TIMINGS

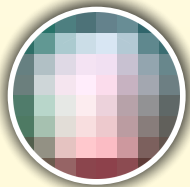
Class 1 to 5

09:00 AM to 02:30 PM

Class 6 to 12

09:00 AM to 03:30 PM





Swami Vivekanand

Government Model School

DECEMBER 2025



JANUARY 2026

Holidays will be according to SHIVIRA Calendar and
Govt. of Rajasthan Calendar

CELEBRATIONS.

- NATIONAL YOUTH DAY, SWAMI VIVEKANANDA JAYANTI, CAREER DAY 12TH JANUARY.
- MAKAR SAKRANTI, PONGAL 14TH JANUARY.
- NETAJI SUBHASH CHANDRA BOSE JAYANTI (RASHTRIYA PARAKRAM DIWAS) 23RD JANUARY.
- BASANT PANCHAMI 23RD JANUARY.
- NATIONAL GIRL CHILD DAY 24TH JANUARY
- NATIONAL VOTER'S DAY 25TH JANUARY.
- REPUBLIC DAY CELEBRATION 26TH JANUARY.
- SHAHEED DIWAS(NATIONAL CLEANLINESS DAY) 30TH JANUARY (2 MINUTES SILENCE PRAYER AT 11:00 AM MUST BE OBSERVED)
- YOUTH WEEK MUST BE CELEBRATED FROM 6TH JANUARY TO 12TH JANUARY.

OFFICE WORK

- PTA, SMC, SDMC MEETING 26TH JANUARY.

ACTIVITIES

- 3RD PERIODIC TEST/ASSESSMENT EXAM. 2ND WEEK.
- SCHOOL LEVEL ENGLISH DRAMA COMPETITION 3RD WEEK.
- CLUSTER LEVEL ENGLISH DRAMA COMPETITION 4TH WEEK.
- STATE LEVEL ENGLISH DRAMA COMPETITION 5TH WEEK AT RAJSAMAND, (RAJSAMAND) CLUSTER 13
- SUBJECT WISE WEEKLY TEST FOR BOARD CLASSES.
- PRE-BOARD EXAM. X AND XII (2ND WEEK AND 4TH WEEK)
- MOCK PRACTICAL CLASS X, XII.
- CBSE PRACTICALS AS PER BOARD DIRECTION.
- CLASS 1ST TO 8TH INTER SECTION, QUIZ (ENGLISH, HINDI) 1ST WEEK.
- CLASS 1ST TO 8TH INTER SECTION, QUIZ (MATHS) 2ND WEEK.
- CLASS 1ST TO 8TH INTER SECTION, QUIZ (SCIENCE) 3RD WEEK.
- CLASS 1ST TO 8TH INTER SECTION, QUIZ (SST) 4TH WEEK.
- 3RD EXPOSURE CUM EXCURSION VISIT LOCAL.

ALL CBSE RELATED CIRCULARS MUST BE FOLLOWED AS PER THE CBSE DIRECTIVES.

S	M	T	W	T	F	S
				1	2	3
4	5	6	7	8	9	10
11	12	13	14	15	16	17
18	19	20	21	22	23	24
25	26	27	28	29	30	31

1

For STAFF

08:30 AM to 04:30 PM

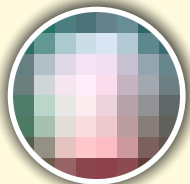
SCHOOL TIMINGS

Class 1 to 5

09:00 AM to 02:30 PM

Class 6 to 12

09:00 AM to 03:30 PM



Swami Vivekanand

Government Model School

JANUARY 2026



FEBRUARY 2026

Holidays will be according to SHIVIRA Calendar and
Govt. of Rajasthan Calendar

CELEBRATIONS.

- NATIONAL DEWORMING DAY 10TH FEB.
- CHHATRAPATI SHIVAJI JAYANTI 19TH FEB.
- INTERNATIONAL MOTHER LANGUAGE DAY, RAMKRISHNA JAYANTI 21ST FEB.
- SCOUT AND GUIDE DAY 22ND FEB.
- NATIONAL SCIENCE DAY 28TH FEB.

OFFICE WORK.

- HEALTH CHECKUP OF STUDENTS AND RECORD UPDATION.
- PTA, SMC, SDMC MEETING ON AMAVASYA.
- ADVERTISEMENT FOR ADMISSION PROCESS.

ACTIVITIES.

- COMPLETION AND REVISION OF SYLLABUS.
- SUBJECT WISE WEEKLY TEST FOR BOARD CLASSES.
- SCIENCE PRACTICAL PREPARATIONS.
- CBSE PRACTICALS AS PER BOARD DIRECTION.
- RESULT ANALYSIS PRE-BOARD.
- COMMUNITY AWARENESS PROGRAMME REGARDING SOCIAL ISSUES 1ST WEEK.
- GUEST LECTURE ON POLICE SYSTEM, ROAD SAFETY 2ND WEEK.
- INTER SECTION QUIZ SCIENCE, MATH 3RD WEEK.
- GUEST LECTURE BY SOCIAL EMINENT PERSONALITY 4TH WEEK.
- SPELL BEE (SPELLING COMPETITION).

ALL CBSE RELATED CIRCULARS MUST BE FOLLOWED AS PER THE CBSE DIRECTIVES.

S	M	T	W	T	F	S
1	2	3	4	5	6	7
8	9	10	11	12	13	14
15	16	17	18	19	20	21
22	23	24	25	26	27	28

2

SCHOOL TIMINGS

For STAFF

08:30 AM to 04:30 PM

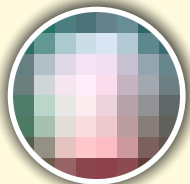
Class 1 to 5

09:00 AM to 02:30 PM

Class 6 to 12

09:00 AM to 03:30 PM





Swami Vivekanand

Government Model School

FEBRUARY 2026



MARCH 2026

S	M	T	W	T	F	S
1	2	3	4	5	6	7
8	9	10	11	12	13	14
15	16	17	18	19	20	21
22	23	24	25	26	27	28
29	30	31				

3

For STAFF

08:30 AM to 04:30 PM

SCHOOL TIMINGS

Class 1 to 5

09:00 AM to 02:30 PM

Class 6 to 12

09:00 AM to 03:30 PM

Holidays will be according to SHIVIRA Calendar and Govt. of Rajasthan Calendar

CELEBRATIONS.

- INTERNATIONAL WOMEN'S DAY 8TH MARCH.
- WORLD CONSUMER DAY 15TH MARCH.
- RAJASTHAN DIWAS 30TH MARCH.

OFFICE WORK.

- LOCAL EXAMINATION PREPARATION.
- PRINTING OF STUDENTS AND TEACHERS DIARY.
- PLANNING OF NEXT SESSION.
- DECLARATION OF RESULTS WITH PTA 31ST MARCH.
- CLOSING ACCOUNTS FOR THE FINANCIAL YEAR.
- PREPARE LOCAL RESULT 4TH WEEK OF MARCH.
- SMC, SDMC MEETING 4TH WEEK OF MARCH.

ACTIVITIES.

- SESSION ENDING EXAMS (1 - 8, & 9, 11).
- RESULT DECLARATION (CLASS 1-8, & 9, 11) ON 31ST MARCH.

SOME IMPORTANT CBSE RELATED WEBSITES.

- www.cbse.nic.in
- www.cbseacademic.nic.in

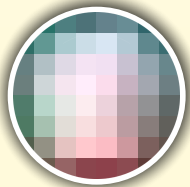
SOME IMPORTANT RCScE RELATED EMAIL ID.

- modelschoolst@gmail.com

CBSE AFFILIATION EXTENSION FEES MUST BE SUBMITTED BEFORE 31ST MARCH.
ALL CBSE RELATED CIRCULARS MUST BE FOLLOWED AS PER THE CBSE DIRECTIVES.

State level Activities and Events for Session 2025-26

S.N.	Name of Activity	Month	Block where to be held	Cluster No.	Remarks
1	DRAWING-PAINTING AND ART & CRAFT COMPETITION.	May 2025	Talera (Bundi)	1	
2	FOLK DANCE (GROUP) AND FOLK SONG (SOLO)	JULY 2025	Pokhran (Jaisalmer)	5	
3	SCIENCE EXHIBITION	Sep. 2025	Ghatol , (Banswara)	3	
4	SOCIAL SCIENCE EXHIBITION	Oct. 2025	Rani (Pali)	12	
5	EXTEMPORE (ENGLISH & HINDI)	Nov. 2025	Dausa (Dausa)	8	
6	MATHS OLYMPIAD	Dec. 2025	Rashmi (Chittorgarh)	7	
7	ENGLISH DRAMA COMPETITION	Jan. 2026	Rajsamand (Udaipur)	13	
8	BAND COMPETITION	To be decided by RCScE			
9	YOGA OLYMPIAD	To be decided by RCScE			



Swami Vivekanand

Government Model School

MARCH 2026



Girl's Hostel



PRIMARY WING



Rajasthan Council of School Education

Second Floor, Block-5, Dr. Radha Krishnan Shiksha Sankul, JLN Marg, Jaipur-302017

E-mail : modelschoolest@gmail.com